

RETIRING RAMP

Type FR21

Publication Number: DO009/0712

Application

FR21 is designed to prevent landing doors or gates being snatched open whilst the lift car is passing through a LOCK zone at intermediate floors. Used in Dewhurst prelocking lift systems it also ensures that the landing door mechanism has functioned correctly before the car is allowed to move away.

Operation

On receipt of a landing or car call the d.c. solenoid is energised causing the ramp to retract and the landing door to be locked. The coil is de-energised and the ramp is extended only when the car reaches the selected floor, where the landing door lock is released.

Installation

The unit is mounted on the side of the lift car to enable the ramp to engage with the roller of the landing door lock. It is suitable for either left or right hand mounting.

Construction

The robust frame is of first grade iron and the ramp is of fabricated steel. See over for other construction data. FR21 is available is now only available without an integral supervisory contact.

Operating Pressures

See over

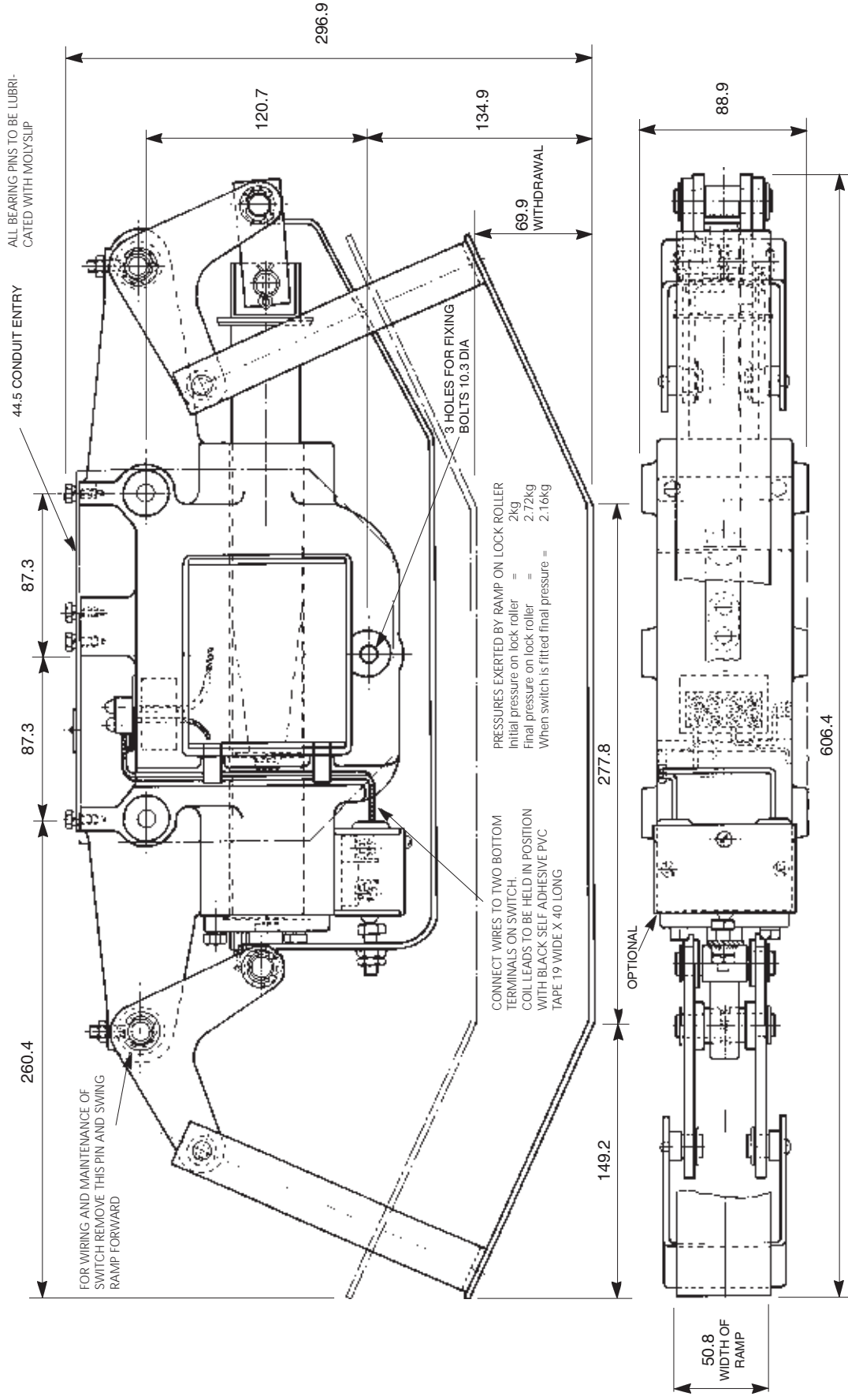
Coil Consumption

95 watts

Weight

18.1 Kg approx.

Coil Voltage (VDC) nominal	Dewhurst Part Numbers	
	Complete Ramp	Coil Only
24	002015-001100	002015-001101
48	002015-001400	002015-001401
60	002015-001700	002015-001701
80	002015-000800	002015-000801
85	002015-000700	002015-000701
100	002015-000100	002015-000101
110	002015-000600	002015-000601
120/130	002015-000500	002015-000501
145	002015-001200	002015-001201
160	002015-001300	002015-001301
185	002015-000200	002015-000201
200	002015-000300	002015-000301
240	002015-000400	002015-000401
260	002015-000900	002015-000901
280	002015-001500	002015-001501
320	002015-001800	002015-001801
340	002015-001600	002015-001601
400	002015-001000	002015-001001



All dimensions in mm

ASSEMBLY OF FR21 RETIRING RAMP